

KOO Series Adjustable Long Throw Multi-Jet Nozzle Diffuser

Material | Aluminum jet nozzles and galvanized steel panel

Air Pattern | Long throw, independently adjustable directional jets

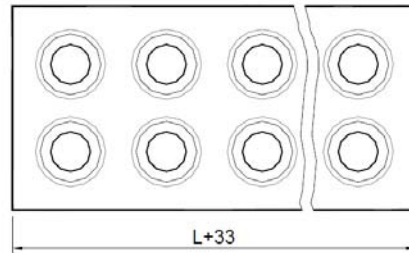
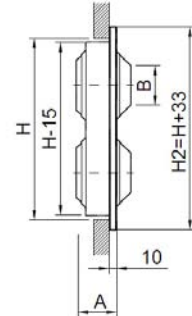
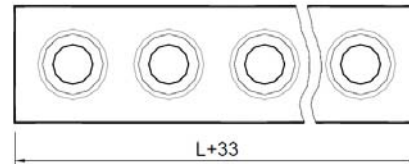
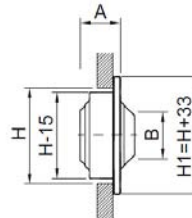
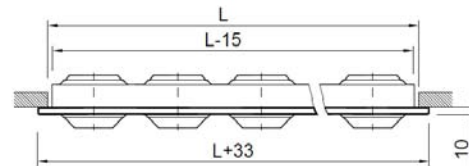


KOO
by MADEL®

PATENTED

Select Dimension		
✓	List Size L x H	Nozzles Qty
	200 x 100	2 x 1
	300 x 100	3 x 1
	400 x 100	4 x 1
	500 x 100	5 x 1
	600 x 100	6 x 1
	700 x 100	7 x 1
	800 x 100	8 x 1
	900 x 100	9 x 1
	1000 x 100	10 x 1
	200 x 200	2 x 2
	300 x 200	3 x 2
	400 x 200	4 x 2
	500 x 200	5 x 2
	600 x 200	6 x 2
	700 x 200	7 x 2
	800 x 200	8 x 2
	900 x 200	9 x 2
	1000 x 200	10 x 2
	300 x 150	2 x 1
	450 x 150	3 x 1
	600 x 150	4 x 1
	750 x 150	5 x 1
	900 x 150	6 x 1
	1050 x 150	7 x 1
	1200 x 150	8 x 1
	300 x 300	2 x 2
	450 x 300	3 x 2
	600 x 300	4 x 2
	750 x 300	5 x 2
	900 x 300	6 x 2
	1050 x 300	7 x 2
	1200 x 300	8 x 2

All dimensions in mm



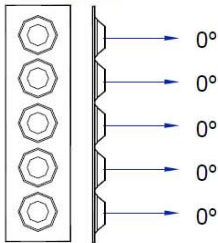
H	A	B
100	35	44
150	57	61
200	35	44
300	57	61

All dimensions in mm

Balancing Position

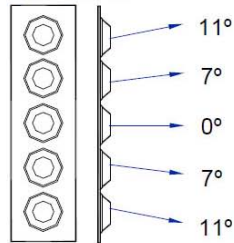
POSITION 1 (0°)

KOO Lx100
KOO Lx150



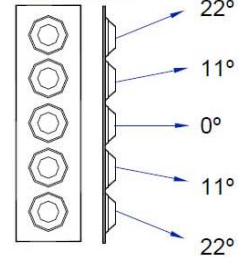
POSITION 2 (22°)

KOO Lx100
KOO Lx150



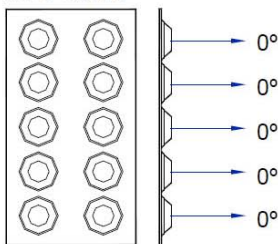
POSITION 3 (45°)

KOO Lx100
KOO Lx150



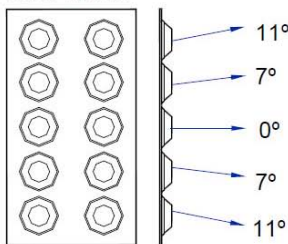
POSITION 1 (0°)

KOO Lx200
KOO Lx300



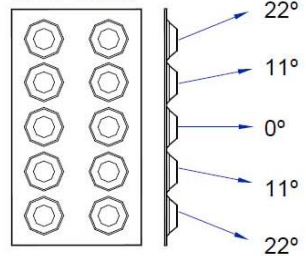
POSITION 2 (22°)

KOO Lx200
KOO Lx300

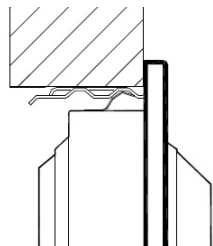


POSITION 3 (45°)

KOO Lx200
KOO Lx300



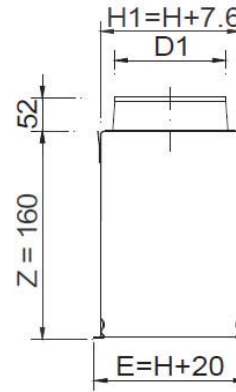
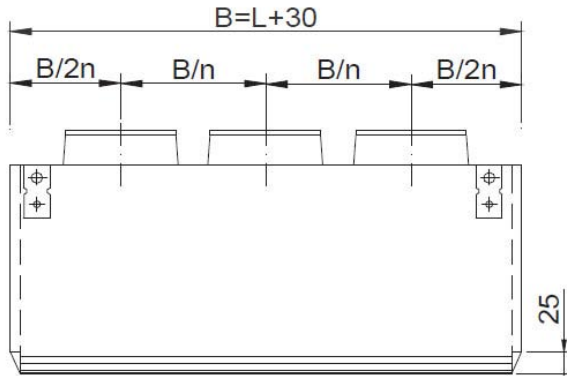
Spring Clips Mounting



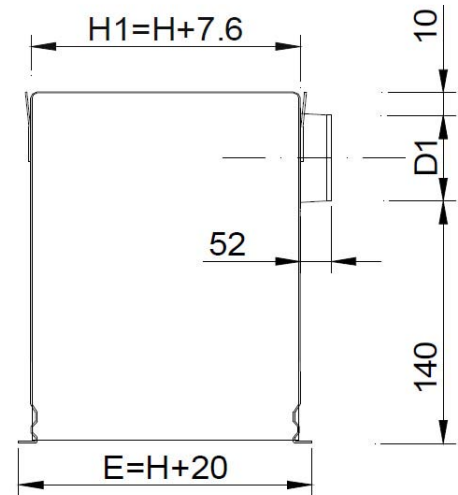
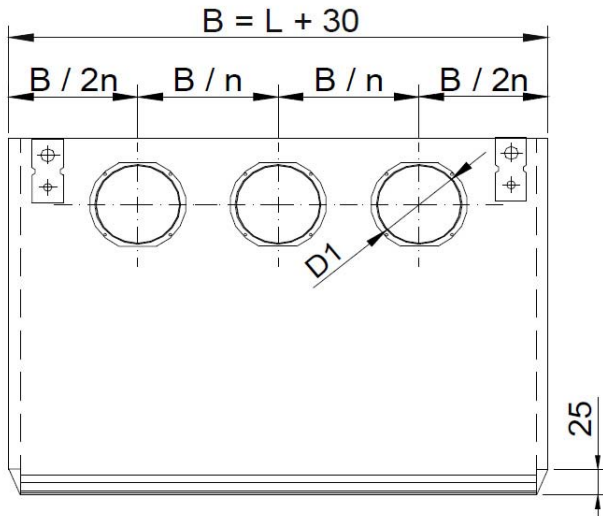
Invisible fixing by means of pressure clips with security hooks for ceiling installation. Requires PLRX plenum or CM mounting frame.

PLRX Plenum

PLRX-T



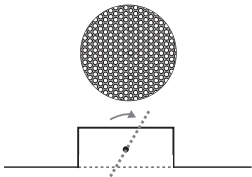
PLRX-S



Neck Diameter and Quantity (n x D)						
L		< 600	< 900	< 1000	< 1200	>= 1200
H	100	1x 98	2x 98	2x 98	2x 98	3x 98
	150	1x 123	2x 123	2x 123	2x 123	3x 123
	200	1x 198	1x 198	2x 198	2x 198	2x 198
	300	1x 248	1x 248	1x 248	2x 248	2x 248

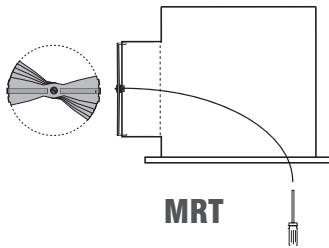
All dimensions in mm

Integrated Air Volume Dampers



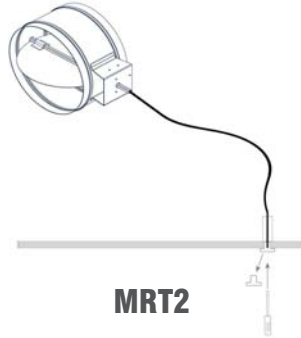
R

Perforated damper +
air equalizer



MRT

Manually operated damper,
cable inside the plenum,
adjustment through face



MRT2

Manually operated damper,
cable through drywall with
termination fixture



EB

Battery operated
electro-balance damper
with remote control,
cable through face



EB2

Battery operated
electro-balance damper
with remote control,
cable through drywall
with termination fixture

Important Note: MRT, MRT2, EB and EB2 Damper Options are only available for KOO with 2 rows (Height 200 mm and 300 mm).

Accessories

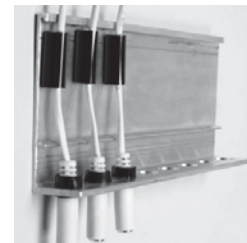
EB-SP1

Single Connector
Drywall Termination
Fixture for EB
dampers



EB-AB8

Eight Connector
Wall Bracket for EB
dampers



EB-SP8

Eight Connector
Drywall Termination
Fixture for EB
dampers



EB-REMOTE

Remote Control for
EB dampers



Balancing Position (optional)	
1	Straight - 0 Degrees (Default)
2	22 Degrees Spread
3	45 Degrees Spread

Mounting	
S	Invisible fixing by means of pressure clips
T	Visible Screws

Finish	
M9016	Powder Coated White RAL 9016
M9006	Powder Coated Metallic Grey RAL 9006
RAL xxxx	Please Specify:

Plenum	
PLRX-T	Top (Back) connection
PLRX-S	Side connection

Insulation	
AL	1/2" Interior Accoustical Liner
R6	2" Exterior R6 Thermal Insulation

Neck-Installed Air Volume Damper	
R	Perforated air volume damper/equalizer
MRT	Manually operated, cable thru face
MRT2	Manually operated, termination fixture
EB	Electro-balanced, battery powered, cable thru face
EB2	Electro-balanced, battery powered, cable thru drywall

Cable Length (MRT2 or EB2)	

Project:
Engineer:
Architect:
Contractor: