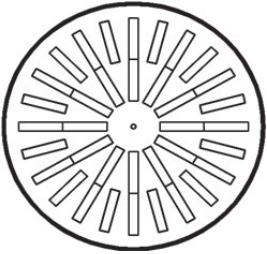


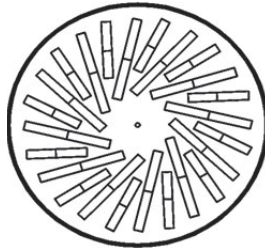
### AXO-ALU-C Series Adjustable Vanes Round Swirl Diffusers



**AXO-ALU-C**  
by MADEL®



**AXO-ALU-C**

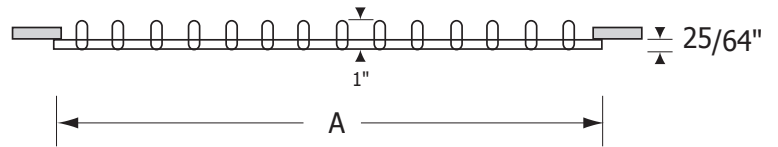


**AXO-ALU-CY**

**Material** | Powder coated stamped heavy gauge aluminum face with ABS vanes, galvanized steel plenum.

**Air Pattern** | Adjustable high induction swirl pattern.

**Ceiling Types** | Open and Closed.

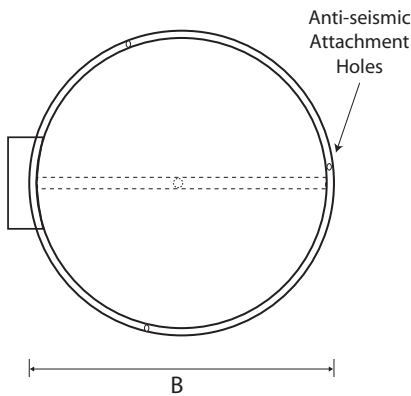
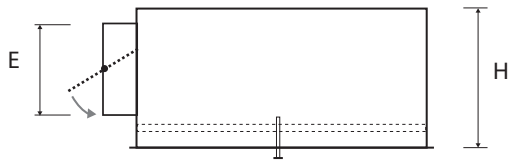


Select Model		
✓	Imperial	A (in)
	AXO-ALU-C 12	11 39/64
	AXO-ALU-C 16	15 35/64
	AXO-ALU-C 20	19 31/64
	AXO-ALU-C 25	24 13/32
	AXO-ALU-CY 25	24 13/32
	AXO-ALU-C 33	32 9/32

Select Options	
<input type="checkbox"/>	Black ABS Vanes
<input type="checkbox"/>	White ABS Vanes

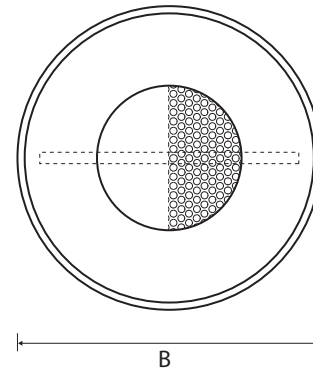
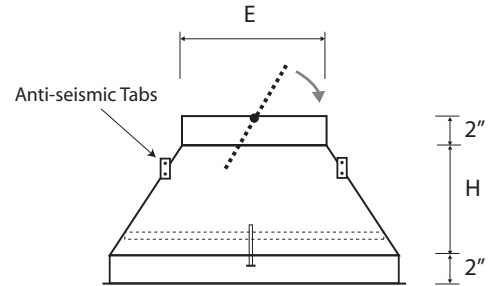
Select Finish	
<input type="checkbox"/>	Powder Coated White RAL9016
<input type="checkbox"/>	Other (specify) :

### Plenum



#### PERFAIR-CS

Cylindrical with side duct connection, ideal for closed ceilings.



#### PERFAIR-CT

Conical with top duct connection, ideal for open ceilings with visible duct.

#### Select Model - Imperial

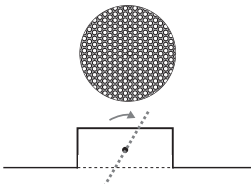
✓	Model	Duct Size	B	E	H
	PERFAIR-CS 1205	5	11 3/8	4 7/8	9
	PERFAIR-CS 1206	6	11 3/8	5 7/8	9
	PERFAIR-CS 1208	8	11 3/8	7 7/8	9
	PERFAIR-CS 1606	6	15 1/4	5 7/8	10
	PERFAIR-CS 1608	8	15 1/4	7 7/8	10
	PERFAIR-CS 2006	6	19	5 7/8	12
	PERFAIR-CS 2008	8	19	7 7/8	12
	PERFAIR-CS 2010	10	19	9 7/8	12
	PERFAIR-CS 2506	6	24	5 7/8	13
	PERFAIR-CS 2508	8	24	7 7/8	13
	PERFAIR-CS 2510	10	24	9 7/8	13
	PERFAIR-CS 2512	12	24	11 7/8	13
	PERFAIR-CS 3312	12	33	11 7/8	16

#### Select Model - Imperial

✓	Model	Duct Size	B	E	H
	PERFAIR-CT 1205	5	11 3/8	4 7/8	6
	PERFAIR-CT 1206	6	11 3/8	5 7/8	6
	PERFAIR-CT 1208	8	11 3/8	7 7/8	6
	PERFAIR-CT 1606	6	15 1/4	5 7/8	6
	PERFAIR-CT 1608	8	15 1/4	7 7/8	6
	PERFAIR-CT 2006	6	19	5 7/8	8
	PERFAIR-CT 2008	8	19	7 7/8	8
	PERFAIR-CT 2010	10	19	9 7/8	8
	PERFAIR-CT 2506	6	24	5 7/8	8
	PERFAIR-CT 2508	8	24	7 7/8	8
	PERFAIR-CT 2510	10	24	9 7/8	8
	PERFAIR-CT 2512	12	24	11 7/8	8
	PERFAIR-CT 3312	12	33	11 7/8	12

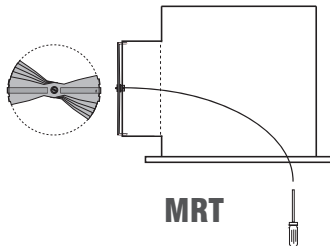
All dimensions in inches

### Air Volume Dampers



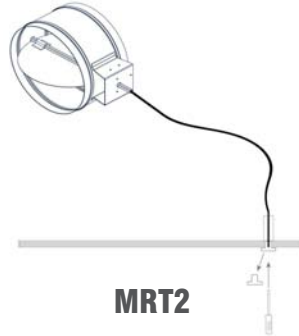
**R**

Perforated damper +  
air equalizer



**MRT**

Manually operated damper,  
cable inside the plenum,  
adjustment through face



**MRT2**

Manually operated damper,  
cable through drywall with  
termination fixture



**EB**

Battery operated  
electro-balance damper  
with remote control,  
cable through face



**EB2**

Battery operated  
electro-balance damper  
with remote control,  
cable through drywall  
with termination fixture

Insulation		
<b>AL</b>		1/2" Interior Accoustical Liner
<b>AL1</b>		1" Interior Accoustical Liner
<b>R6</b>		2" Exterior R6 Thermal Insulation

Neck-Installed Air Volume Damper		
<b>R</b>		Perforated air volume damper/equalizer
<b>MRT</b>		Manually operated, cable thru face
<b>MRT2</b>		Manually operated, termination fixture
<b>EB</b>		Electro-balanced, battery powered, cable thru face
<b>EB2</b>		Electro-balanced, battery powered, termination fixture

Cable Length (MRT2 or EB2)		

<p><b>Project:</b></p> <p><b>Engineer:</b></p> <p><b>Architect:</b></p> <p><b>Contractor:</b></p>
---